

# DRAFT 2026 Climate Plan

7 May 2026

[saanich.ca/climateplan](https://saanich.ca/climateplan)





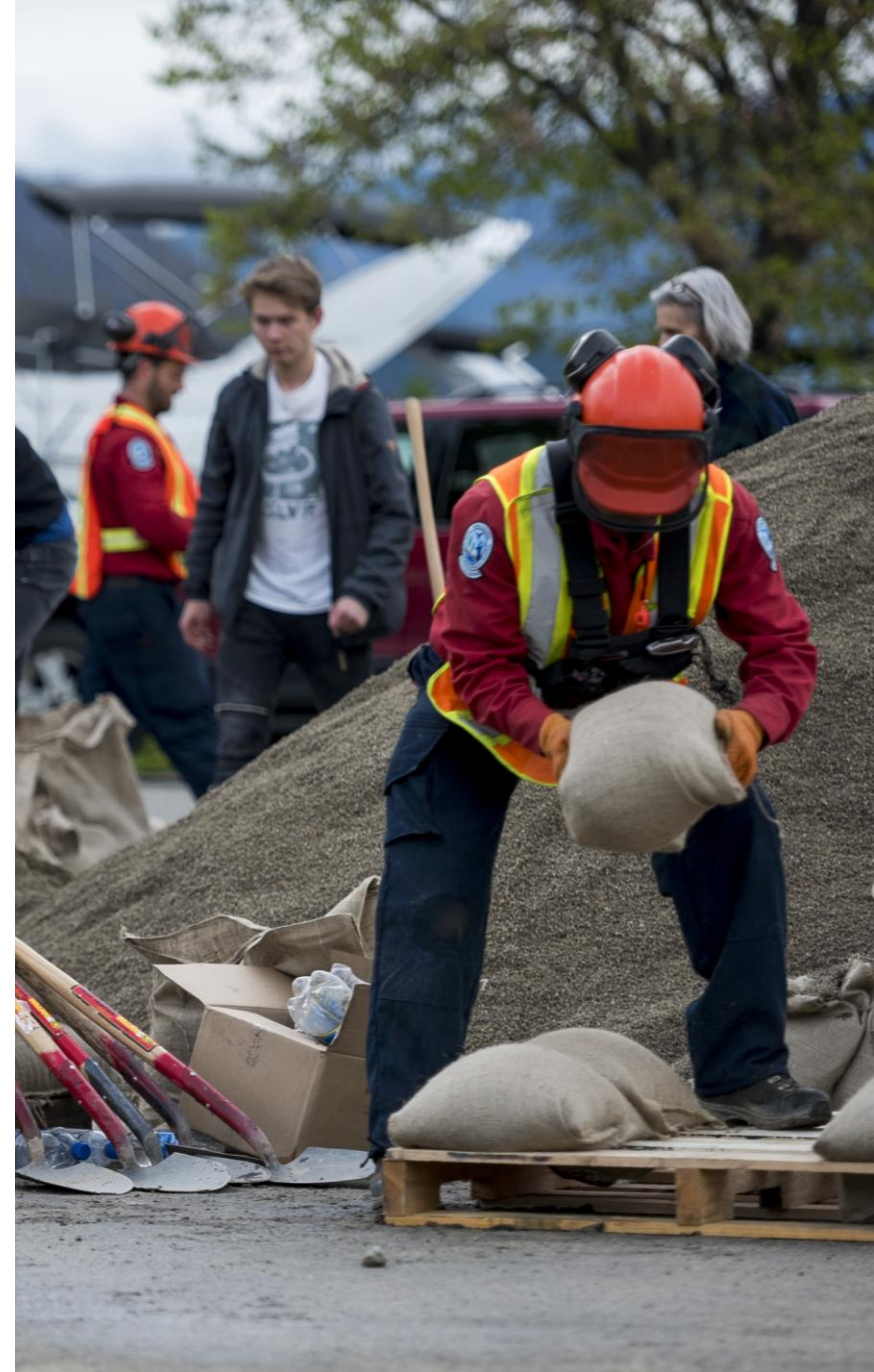
# 2026 Climate Plan Update

- Most of the 2020 Climate Plan actions are now achieved or underway
- Much progress has been made with large emission reductions realized, technological and market advances, and new provincial and local policy & legislation
- The global and local context has also shifted substantially since 2020:
  - increased extreme weather events, housing & affordability issues, access to primary healthcare and world conflicts
- The updated 2026 Climate Plan (available at [Saanich.ca/climateplan](https://saanich.ca/climateplan)):
  - considers these changes & builds upon the great work to date
  - is informed by updated corporate climate risk & community climate hazard assessments, new data, emissions modelling, extensive engagement and valued input from First Nations
  - Outlines a 5-year pathway & actions to meet our climate goals

# CLIMATE CHANGE PROJECTIONS FOR THE CAPITAL REGION

- **Extreme Heat** - warmer temperatures overall, longer and more frequent heat waves
- **Extreme Rainfall** - wetter winters, more extreme rainfall events
- **Drought** - longer summer dry spells
- **Wildfires & Wildfire Smoke** - increased risk of wildfires and smoke from wildfires
- **Sea level rise** - 1m by 2110

More information available at [crd.ca/climate](https://crd.ca/climate)



# BENEFITS OF CLIMATE ACTION



Economic Development & Security



Improved Affordability



Improved Health



Increased Employment



Ecosystem Preservation & Ecosystem Services



# PLAN GOALS



**1. CUT EMISSIONS IN HALF BY 2030 AND TO NET ZERO BY 2050**



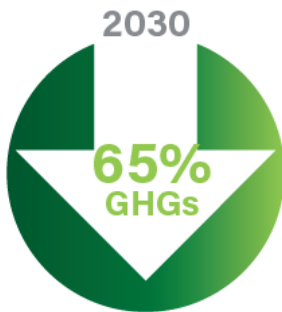
**2. TRANSITION TO 100% RENEWABLE ENERGY BY 2050**



**3. PREPARE FOR A CHANGING CLIMATE**

***LEAD BY EXAMPLE*** through municipal operations

Reduce greenhouse gas (GHG) emissions from municipal operations to 65% of 2007 levels by 2030.



Achieve net-zero GHG emissions from municipal operations by 2040.



2026

# Climate Plan

100% Renewable & Resilient Saanich



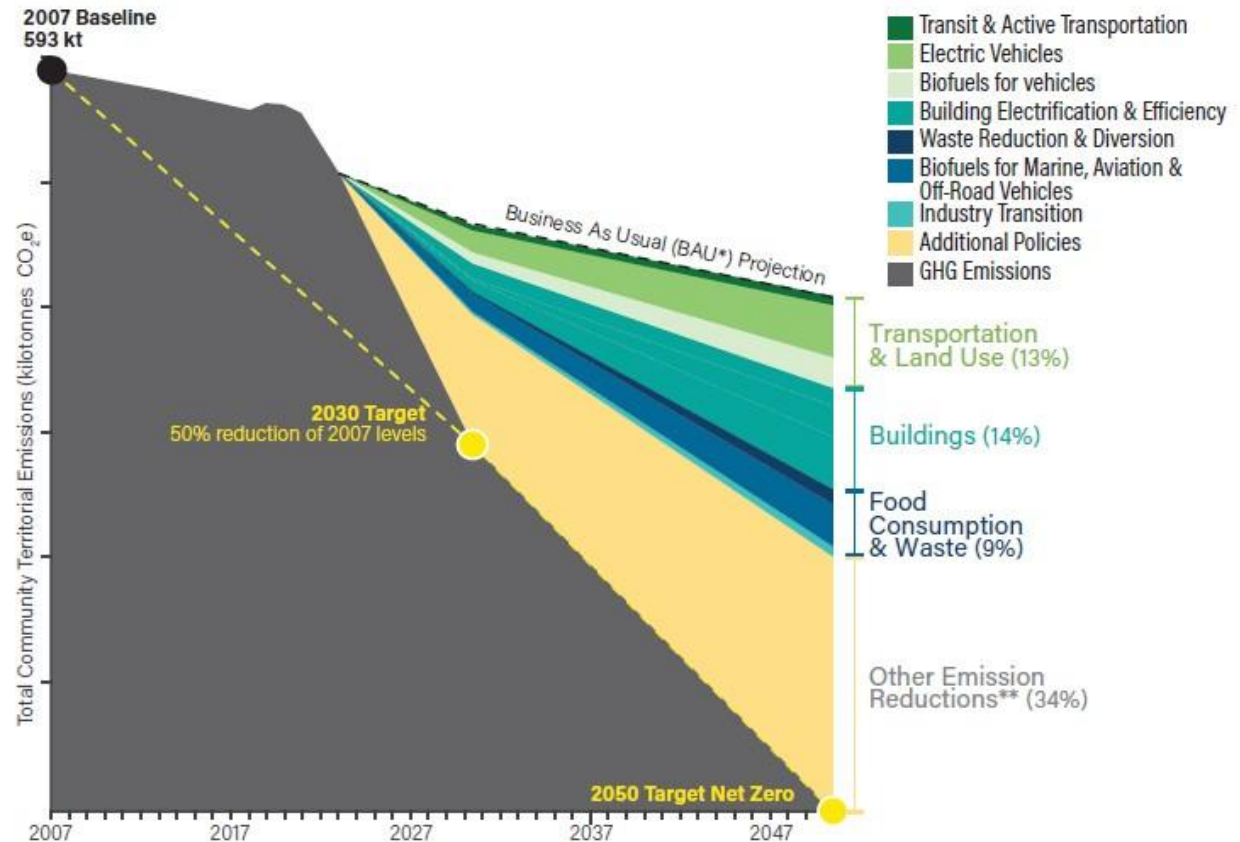
# MODELLED PATHWAY TO 2030 & 2050 TARGETS

Business as usual is **not enough**

No one silver bullet – **change in many areas is required**

**Vehicle electrification and building retrofits** have the greatest GHG reduction potential

**More reductions are still needed** to reach our net zero target by 2050

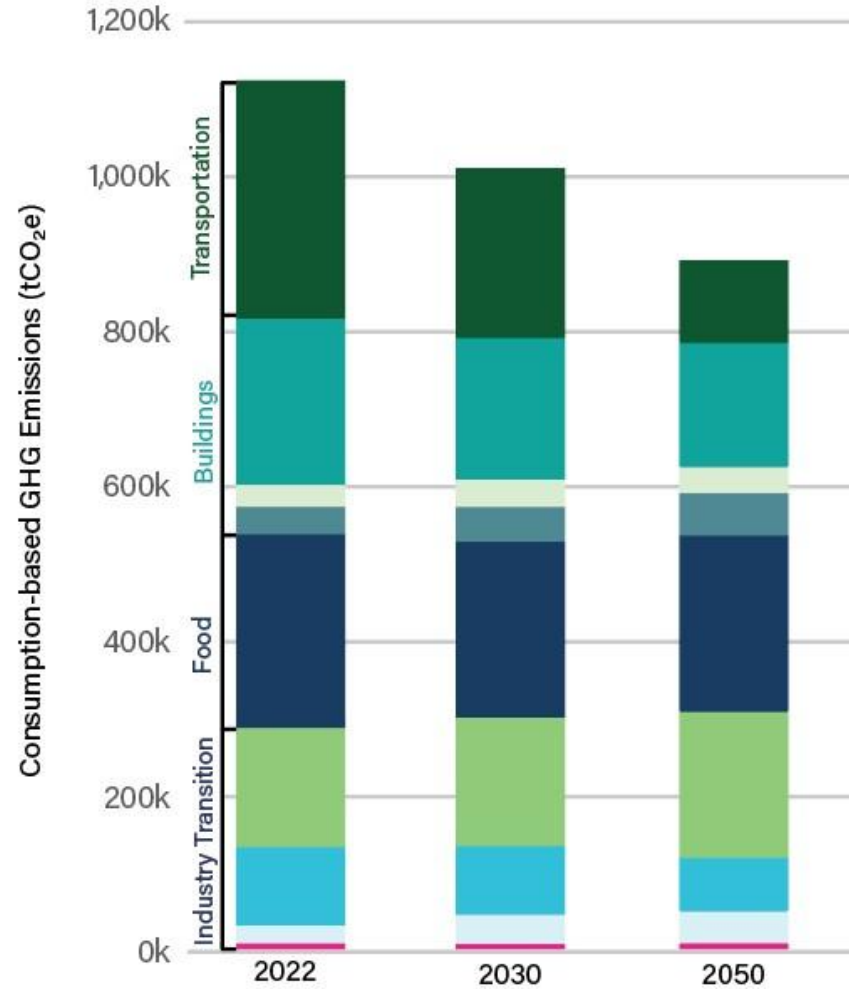


\*BAU Projection includes increases in population and employment, anticipated building type mix, and the effects of confirmed and existing policies and regulations at all levels of government.

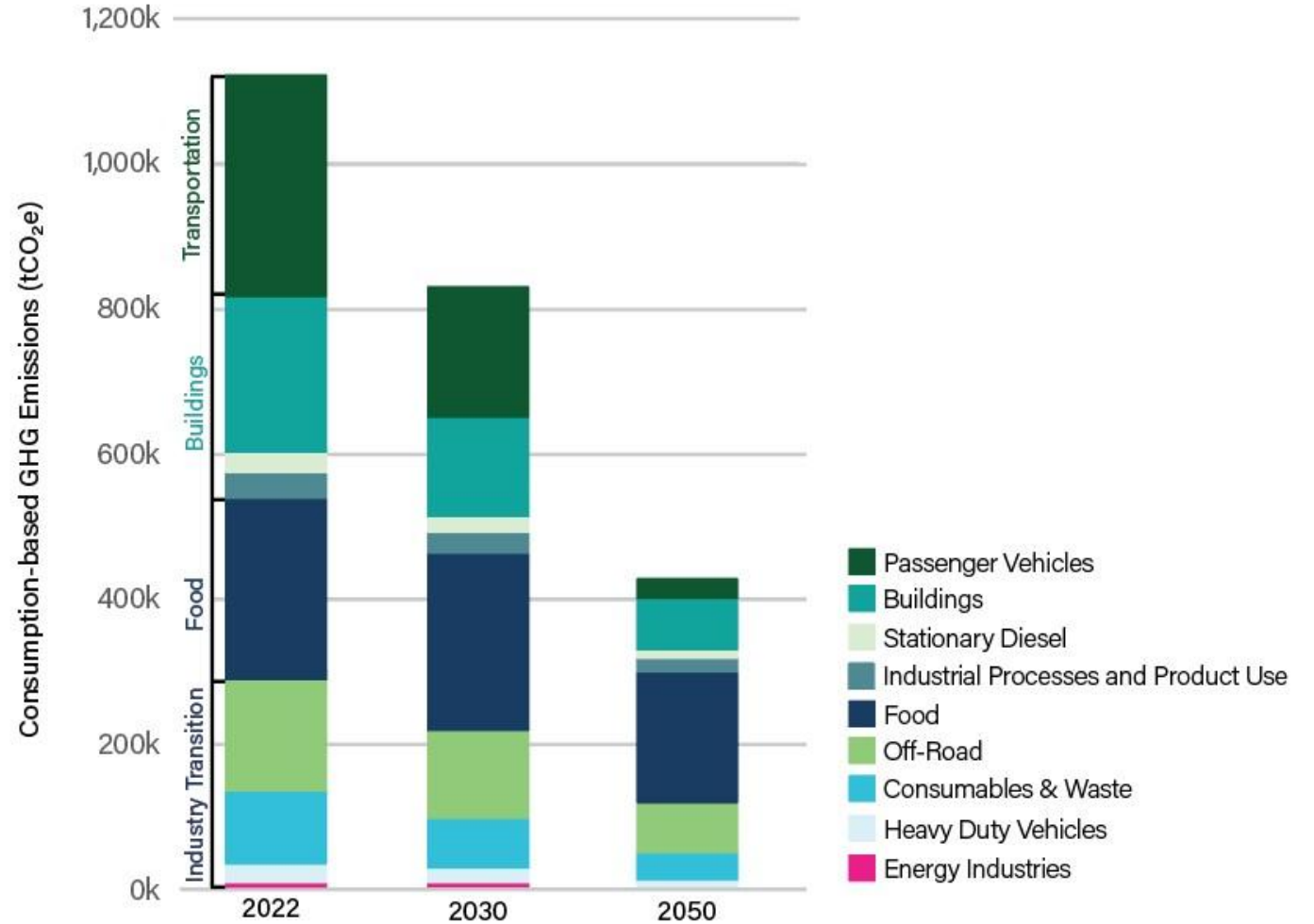
\*\*More policies and industry changes are required beyond those modelled above in order to meet our targets. Remaining emissions are found in all sectors.

# MODELLED PATHWAY TO REDUCE CONSUMPTION BASED EMISSIONS

Consumption Based Emissions Business as Usual



Consumption Based Emissions Reduction Pathway



- Passenger Vehicles
- Buildings
- Stationary Diesel
- Industrial Processes and Product Use
- Food
- Off-Road
- Consumables & Waste
- Heavy Duty Vehicles
- Energy Industries

# 2026 CLIMATE PLAN GUIDING PRINCIPLES

## 1. BE BOLD

Be ambitious and courageous, take risks and lead by example.

## 2. FULFILL OUR RESPONSIBILITY TO FUTURE GENERATIONS

Honour our shared existence across generations and include quality of life considerations for youth and future generations in our actions.

## 3. VALUE RESPECT (ÁTOL), INTERCONNECTEDNESS (ŁŁŁŁ), AND RECIPROCITY (EN SĶÁU)

Be part of cultural change towards respectful, reciprocal relationships that recognize our relationship to the earth, relationship to **ÁLENENEŁ** (homeland or homeplace), the interconnectedness (ŁŁŁŁ) between planetary and human health, and our duty to care.<sup>23</sup>

## 4. VALUE NATURE AND OUR UNIQUE ISLAND (TETÁČES) ECOSYSTEM

Value the intrinsic worth of our unique environment and ecosystems, and be mindful of our impact, recognizing the essential services they provide for our survival and climate resiliency.

## 5. WORK TOWARDS RECONCILIATION

Support Saanich's work towards reconciliation with local First Nations governments and Indigenous organizations through collaboration on climate action. Learn about and seek to live out environmental values of local Nations, such as those shared by the **WSÁNEĆ** Leadership Council of **EN ŚWIST E TŦEN S,HELİ**<sup>24</sup>, **SKÁLS**<sup>25</sup>, **ĆELÁNĒN**<sup>26</sup>, **WSÁNEĆ,Ł**<sup>27</sup>, and **NEHİMET**<sup>28</sup>. And we look forward to learning more from **łăk'wəŋən** Nations.

## 6. BE EVIDENCE-BASED

Use Western and Indigenous knowledge and research to make proactive and informed decisions about effective actions, while being adaptable and responsive to future changes. In the case of uncertainty, the precautionary principle will guide decision-making.

## 7. TAKE A CONSUMPTION BASED APPROACH

Reduce the consumption of raw materials and energy, shifting to a circular economy approach using renewable energy and sustainable materials.

## 8. SHARE THE BENEFITS AND IMPROVE WELLBEING

Design climate actions to achieve multiple benefits, including human and ecosystem health, emergency preparedness, affordability, and economic and employment opportunities and ensure that the benefits and burdens of climate action are shared equitably including procedural, structural, and distributional equity.

## 9. BE COLLABORATIVE

Engage, collaborate and partner (**HIWESTEL**<sup>29</sup>) with other departments, residents, businesses, institutions, other municipalities, First Nations and senior levels of government, as it will take coordinated action at all levels to meet our climate targets.

## 10. ACT GLOBALLY

Consider global impacts when making decisions to ensure our actions are beneficial outside our boundaries.

# 2026 CLIMATE PLAN STRUCTURE

6 Focus Areas

23 strategies

98 actions



**TRANSPORTATION &  
LAND USE**



*Photo Credit: Uptown*

**BUILDINGS**



**FOOD, CONSUMPTION  
& WASTE**



**ECOSYSTEMS**



**COMMUNITY  
WELLBEING & RESILIENT  
INFRASTRUCTURE**



**LEADERSHIP IN DISTRICT  
OPERATIONS**

# TRANSPORTATION & LAND USE

## VISION

Saanich residents live in complete communities where trips can be easily and safely made by sustainable forms of transportation, including walking, cycling, public transit and zero-emission shared and personal mobility options. Goods and services are delivered in an efficient transportation system with vehicles that produce no emissions.

## STRATEGIES

- T1.** Implement sustainable land use patterns
- T2.** Increase active transportation uptake
- T3.** Support transit and multi-modal transportation options
- T4** Embed climate resilience into the active transportation network
- T5** Accelerate Electric Vehicle adoption



# BUILDINGS

## VISION

Our homes and buildings are comfortable, healthy, efficient and affordably powered with renewable energy. Buildings in Saanich are designed or upgraded with projected climate changes in mind to ensure we are resilient to extreme heat, wildfires and smoke events, extreme precipitation, drought and sea-level rise.

## STRATEGIES

- B1.** Create a strong foundation for the transition to an efficient, resilient and electrically-powered building stock
- B2.** Require efficient, net-zero carbon new construction
- B3.** Accelerate zero-carbon, energy efficiency and resiliency in existing buildings
- B4.** Increase energy resiliency and renewable energy supply



*Photo credit: Uptown*

# FOOD, CONSUMPTION & WASTE

## VISION

Saanich is home to an affordable, abundant, environmentally responsible and resilient food system and circular economy, where the climate impacts of food and consumption are minimized and waste is reimagined as a resource that strengthens local economic development.

## STRATEGIES

- F1.** Reduce the climate impact of food production and consumption
- F2.** Improve the resiliency and self-sufficiency of the local food system
- F3.** Move towards "lighter living" and a circular economy in Saanich



# ECOSYSTEMS

## VISION

Local ecosystems are cared for, respected, protected and restored and continue to thrive, adapt, provide critical services and support Indigenous ways of being.

## STRATEGIES

- E1.** Protect and manage natural assets as critical infrastructure
- E2.** Enable natural systems to thrive and adapt in a changing climate



# COMMUNITY WELL-BEING & RESILIENT INFRASTRUCTURE

## VISION

People and organizations in Saanich are healthy and resilient in a changing climate, connected to the natural environment and their community, and empowered to take climate action. Saanich takes a holistic approach, embedding projected climate changes into decision making, service delivery, asset management, and infrastructure upgrades and design.

## STRATEGIES

- C1.** Transition towards climate-ready infrastructure
- C2.** Prepare for long-term sea level rise
- C3** Ensure all Saanich community members are resilient to climate change
- C4** Empower Saanich residents and businesses to take climate action



# LEADERSHIP IN DISTRICT OPERATIONS

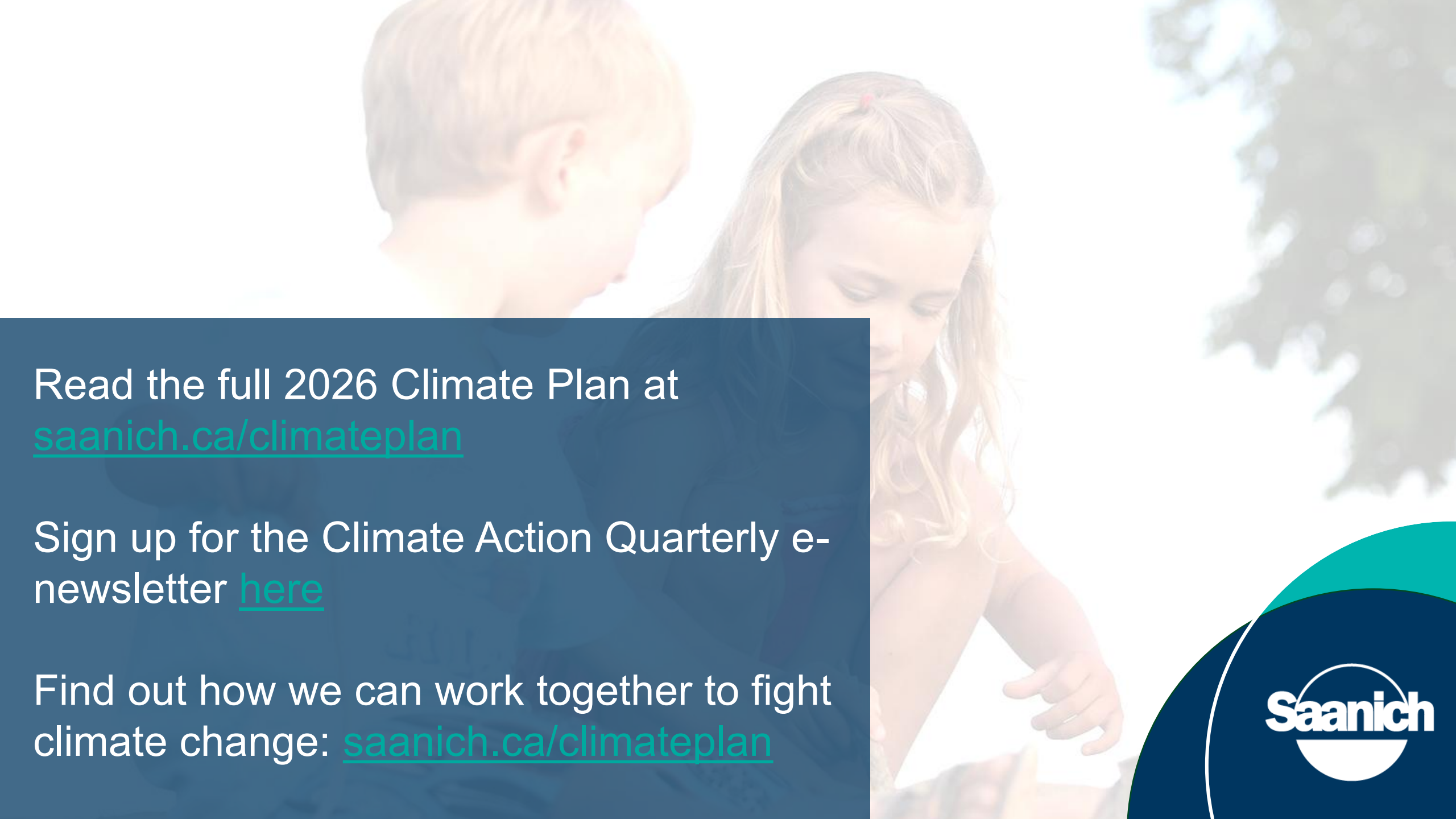
## VISION

By 2040, the District of Saanich will have fully embedded climate-change mitigation and adaptation into its operations and organizational culture. Municipal services are powered with 100% renewable energy, achieve zero greenhouse-gas emissions, minimize embodied emissions and waste, and remain resilient in a changing climate.

## STRATEGIES

- L1.** Integrate climate action into Saanich processes and decision-making
- L2.** Become a climate friendly employer
- L3.** Transition to efficient, renewably-powered and resilient vehicles and equipment
- L4.** Continue to transition to efficient, renewably-powered and resilient municipal buildings
- L5.** Reduce waste and implement a circular economy approach in all District operations



A young boy and girl are looking at something together outdoors. The boy is on the left, and the girl is on the right. They are both looking down at something in front of them. The background is bright and slightly blurred, suggesting an outdoor setting with trees.

Read the full 2026 Climate Plan at [saanich.ca/climateplan](https://saanich.ca/climateplan)

Sign up for the Climate Action Quarterly e-newsletter [here](#)

Find out how we can work together to fight climate change: [saanich.ca/climateplan](https://saanich.ca/climateplan)

